

ABYSS BATTERY®, INC.

Portable Deep-Drop / Kite Electric
Fishing Reel Battery
PAB9000 USER MANUAL

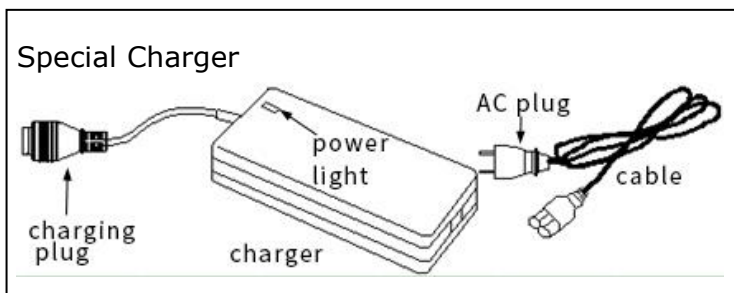
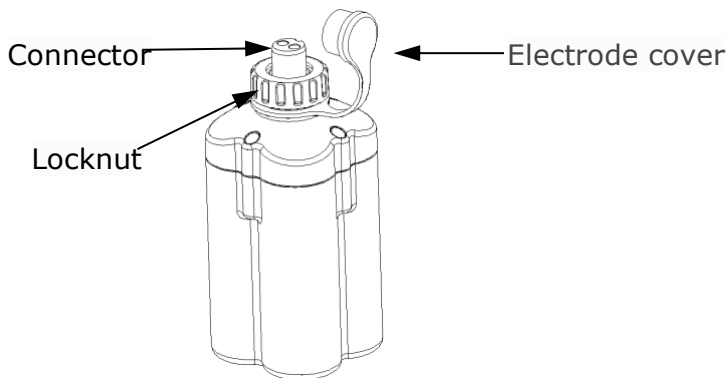


Thank you for purchasing (PAB9000)
Please read carefully, keep properly and fully
understand product performance.

■ Component Explanation:

- ◆ Contains Items
PAB9000 battery、special charger (optional
accessory: battery sleeve, 0.45 meter cable,
battery detector)

PAB9000

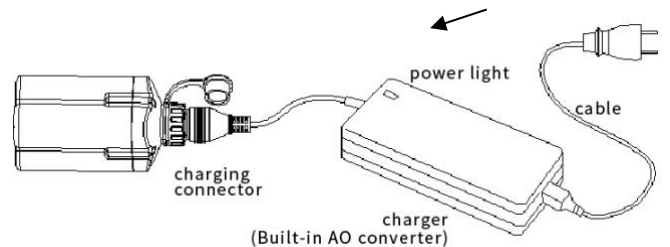


■ Charging:

The charging capacity is about 50% when you
receive it, so please fully charge before use.
Procedure: 【When using PAB9000 charger】

- ① Align the electrode notch of the battery
connector with the electrode notch of the
charger plug, insert it to the bottom, and
tighten the locknut.
- ② Plug the charger power cord into the charger.
- ③ Insert the charger power cord plug into
AC100~220V socket, The charger indicator
turns red and charging starts.

Be sure to follow the above steps to charge the
battery.



Power light	Implication
Red light on:	Charging
Green light on:	Fully charged
Red light flashing:	Abnormal charging

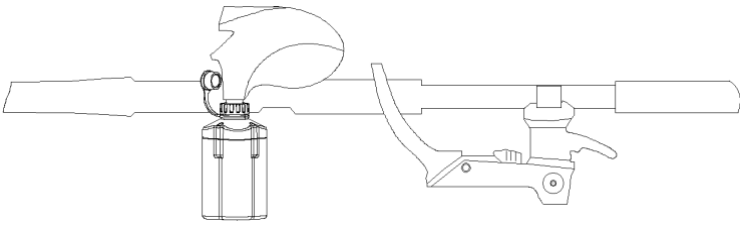
- ◆ Don't charge in a place with combustible
materials around.
 - ◆ According to the remaining capacity of the
battery before charging, the charging time
will vary.
 - ◆ When you find an abnormality, please contact
Abyss Battery® (855)-719-1727.
- ④ After the battery is fully charged, please
unplug the charger power cord in time.
 - ⑤ Disconnect the battery from the charger.
 - ⑥ Fasten the electrode protection cover.



■ Instructions:

Method of connecting battery and electric reel directly

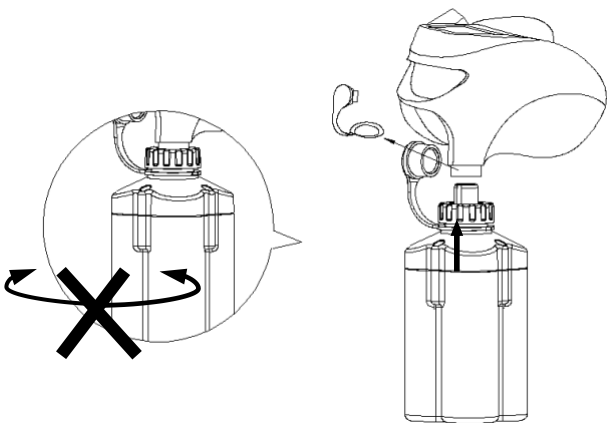
- ① Method one: **After installing the battery into the protective cover, fix on the fishing rod, then electric reel relates to the power cord.**
- ② Method two: **The battery is directly connected to the electric reel.**
- ③ Above two methods: Tighten the lock-nut to fix (as follow picture) .
 - ◆ Do not rotate the battery.
 - ◆ The position of the battery and the pole stand: The battery must not interfere with the fishing rod and the boat's edge.



⚠ Attention **DO NOT** Leave the battery connected while underway.

⚠ Attention **Do NOT** put too much pressure on the battery.

⚠ Attention **Do Not** operate beyond intended specifications.



After using battery, please fasten the electrode protection cover, if there is any moisture please dry it before buckling and storing the battery.

■ Safety Instructions:

To use safely and avoid hazards, please follow the instructions and warning labels.

① Battery Safety Instructions:

⚠ WARNINGS

Don't use the battery under a hot, hyperbaric, or sealed environment. Don't put the battery in fire or water.

Don't break, heat, decompose or modify the battery.

Please avoid the direct sunlight and do not put the battery in the car.

When use the battery, please keep the temperature at $-20^{\circ}\text{C}\sim 60^{\circ}\text{C}$.

Please use the designated charger and comply with the charging manual.

Don't apply for other items except electric reel. It's specifically designed for fishing reels

Please avoid the battery from impacting strongly or dropping from heights.

Cell damage, liquid flow, please take precautions. If the battery fluid contaminates the skin, please immediately wash with water. If it results in cystitis, please go to the hospital immediately.

If you plan on storing the battery for a long period of time, please keep at temperature at $-20^{\circ}\text{C}\sim 25^{\circ}\text{C}$ dry and in corrosive free environment.

■ PAB9000 Characteristics:

- ① The battery shell is made of high-strength, high-toughness, and impact-resistant ABS material (class VO).
- ② The battery protection system has overcharge, over discharge, overcurrent, short circuit, temperature protection, undervoltage lockout load, charge balance function, which can extend battery life.
- ③ When the electric wheel is overloaded, the safety protection function of the battery will be activated, and the power supply will be temporarily stopped. If the battery is disconnected and reconnected, it will automatically recover.
- ④ Under normal use, when the battery is recharged 500 times, the discharge capacity is $\geq 80\%$ of the initial capacity.
- ⑤ Battery life: Under normal use, after more than 1,000 cycles of charging and discharging, the battery may not be able to charge or the power

will be greatly reduced, then please replace with a new battery.

- ⑥ It's recommended that the battery should only be 50% during transportation.

⚠ ATTENTION!

Since the battery will self-discharge during storage, please charge it once every 6 months when it is stored for a long time or not in use. When the battery is installed on the electric reel, the connecting part of the battery and the electric reel cannot be forced. The electrode protection cover is not completely waterproof. Please do not immerse the electrode part in water. Please do not use organic solvents such as gasoline. If there is abnormal heating, peculiar smell, smoke, and other abnormalities occur during use, charging, or storage, please stop using it immediately contact Abyss Battery.

■ Charger Safety Instructions:

⚠ ATTENTION

Don't break, heat, decompose or modify the charger. Please use AC100~220V 50Hz/60Hz socket. Please keep the room temperature at 0°C~45°C. Unplug the power plug from the socket when not charging.

■ External maintenance

- (1) Please wipe the dirt of the battery (except the electrode part) with a clean towel dampened with clean water.
- (2) When cleaning the dirt of the electrode, please be careful not to damage the protective film of the electrode surface.

■ 【Fault Judgment】

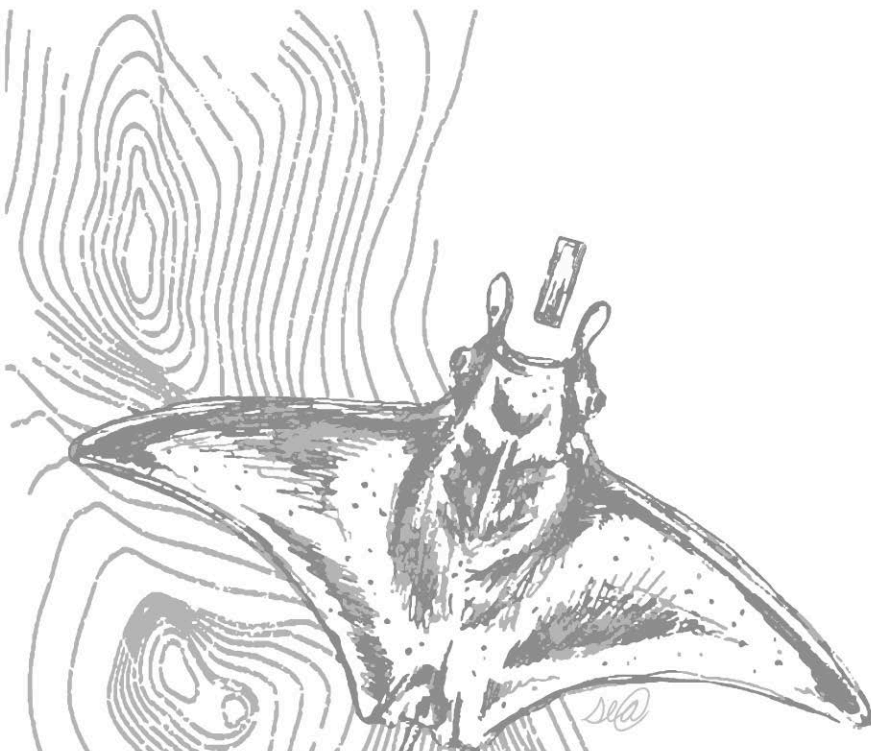
Situation	Fault confirmation and handling method
Battery Heat	Charging and discharging heat is normal.
	If the battery is too hot to touch, the battery may be abnormal. Stop using it immediately and check at the dealer.
Electric reel does not work, or the working time becomes shorter	Battery exhausted, please charge.
	Please confirm whether there is any other matter in the electrode contact point.
	The battery protection function is activated, please disconnect the battery 5 seconds before reconnecting. (In the case of high temperature protection, it takes about 15 minutes to restart (Temperature at 25°C)) .
Battery can't be charged	The battery has a service life. If the discharge time is significantly lower after normal charging, please replace it with a new battery.
	Please confirm whether [Battery and charger] [charger and power cord] [Power cord and plug] are connected correctly.
	Charging temperature protection (charging temperature is between 0°C-45°C, it may not be able to charge if it exceeds this range.)



■ Specifications

Portable battery	Voltage	Voltage: DC 14.8V
	Capacity	Capacity: (9000±200) mAh (0.2C 25°C)
	Dimension	51mm(length)×51mm(width)×192 mm(height)
	Weight	about730g

Charger	Input Parameter	AC100-240V 50/60HZ
	Output Parameter	DC16.8V 4A (3A)
	Charging Time	About 2.7 hours (about3.6 hours)
	Red light on: charging Green light on: full charge Charging temperature at 0°C-45°C	



ABYSS
BATTERY®