



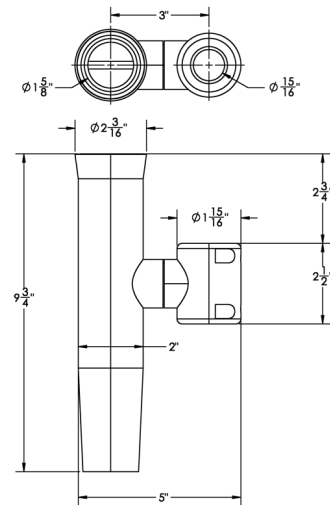
STAINLESS STEEL CLAMP-ON ADJUSTABLE ROD HOLDERS



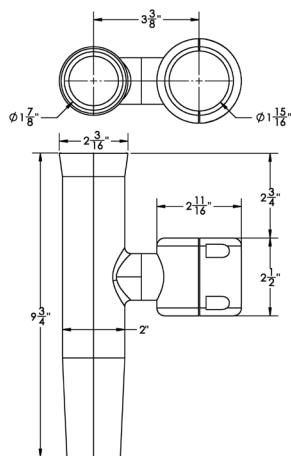
Turn your boat into a strategic fishing machine and no longer worry about fabricating rod holders onto your T-top. The TACO Marine Type-316L Stainless Steel Clamp-On Adjustable Rod Holder allows you to place your combo at any location on your T-top or anywhere there is tubing on your boat.

FEATURES & BENEFITS

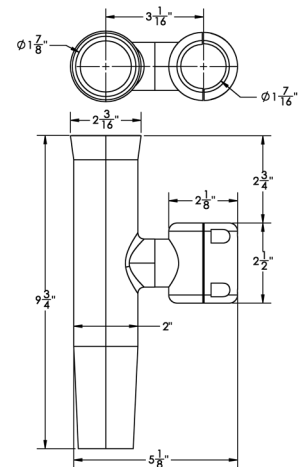
- For use on vertical and horizontal pipe/tube
- Manufactured from Type-316L stainless steel
- Adjustable clamp with two inserts fits two pipe/tube sizes
- Rotates and lock every 18 degrees
- Flared opening
- I-beam weld pin base
- One-rod holder fits most standard T-Top outer rings
- Easy, clamp-on installation in just minutes
- Includes form-fitted PVC white liner and two white clamp inserts
- Patent number US7309054



F16-2600



F16-2630



F16-2623

PART #	DESCRIPTION	CLAMP FITS OD	LOCATION	RH ID	FINISH	STD. PK.	UOM	UPC
F16-2600POL-1	Stainless-Steel Clamp-On Adjustable Rod Holder	7/8" & 1" OD (Tube)	Bow Rail, Grab Rail	1-5/8"	Polished	6	EA	630838022136
F16-2623POL-1	Stainless-Steel Clamp-On Adjustable Rod Holder	1-1/6" & 1-5/16" OD (Tube) Pipe, 1-1/4" OD (Tube)	T-Top, Leaning Post, Poling Platform	1-5/8"	Polished	6	EA	630838028534
F16-2630POL-1	Stainless-Steel Clamp-On Adjustable Rod Holder	1-11/16" & 1-5/16" OD (Tube) Pipe	T-Top, Leaning Post, Poling Platform	1-5/8"	Polished	6	EA	630838022006

